



ST. BEES  
<CLOSE>  
90 - 82





# 90 St. Bees Close, Hulme, Manchester, M14 4GG

Jordan Fishwick are pleased to offer for sale this fantastic size 3 bedroom end terrace on St Bees Close, located just 1 mile from Manchester City Centre. The house offers easy access to nearby retail park with supermarket, fast food restaurants and petrol station, good bus routes in and out of the city. The house has off road parking to the front and a well presented enclosed rear garden. Internally, you will find an open plan living room/diner, updated kitchen, cloakroom/utility room with W.C and pedestal sink. On the first floor you will find 3 double bedrooms and main bathroom. NO ONWARD CHAIN.

## Price £250,000

### Viewing arrangements

Viewing strictly by appointment through the agent  
245 Deansgate, Manchester, M3 4EN 0161 833 9499 opt 3

#### Entrance Hall

#### Living Room/Diner

Fitted carpet. Sliding doors to the garden. Window. TV point.

#### Kitchen

Range of wall and base units with complimentary worktops over. Integrated fridge/freezer, oven, 5 ring gas hob. Freestanding dishwasher. Sink with mixer tap. Spotlights.

#### W/C

Low level w/c. Sink with two taps. Plumbing for washing machine.

#### Bedroom 1

11'11" x 10'1"

Fitted carpet. Ceiling light. Fitted wardrobe. Radiator.

#### Bedroom 2

11'3" x 9'3"

Fitted carpet. Ceiling light. Radiator.

#### Bedroom 3

11'3" x 9'3"

Vinyl flooring. Ceiling light. Radiator.

#### Bathroom

Bath with mixer shower over. Low level w/c. Sink with mixer tap. Heated towel rail.

## Externally

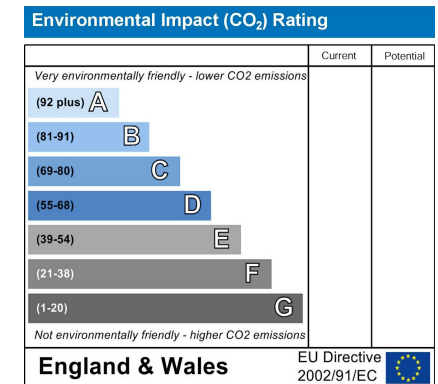
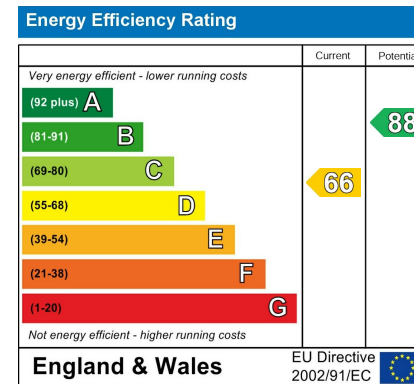
Front and rear gardens. Driveway.

## Additional Information

FREEHOLD.

No onward chain.

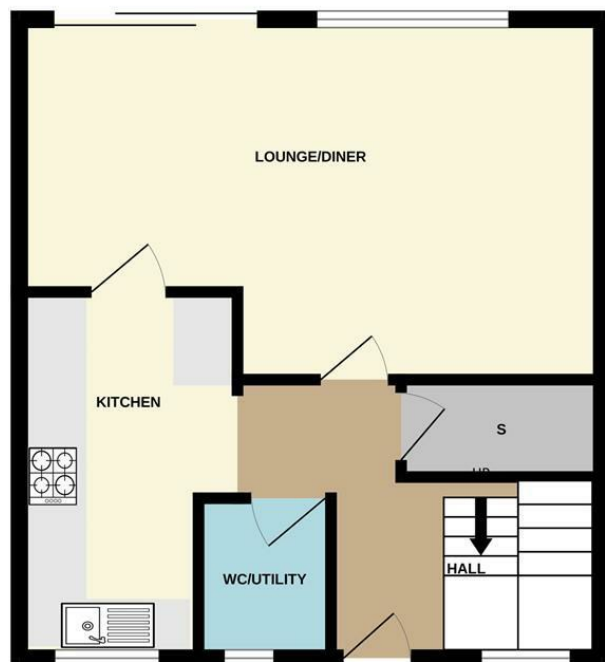
Council Tax Band A



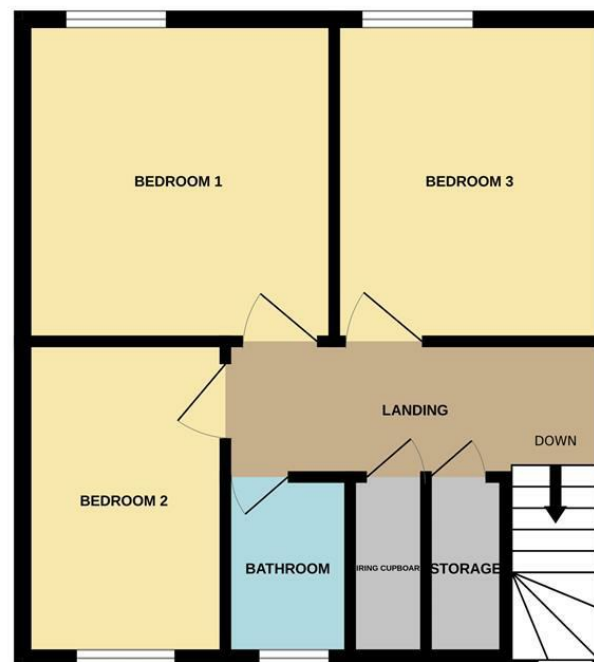




GROUND FLOOR



1ST FLOOR



Measurements are approximate. Not to scale. Illustrative purposes only  
Made with Metropix ©2023



These particulars are believed to be accurate but they are not guaranteed and do not form a contract. Neither Jordan Fishwick nor the vendor or lessor accept any responsibility in respect of these particulars, which are not intended to be statements or representations of fact and any intending purchaser or lessee must satisfy himself by inspection or otherwise as to the correctness of each of the statements contained in these particulars. Any floorplans on this brochure are for illustrative purposes only and are not necessarily to scale.

Offices at: Chorlton, Didsbury, Disley, Hale, Glossop, Macclesfield, Manchester Deansgate, Manchester Whitworth Street, New Mills, Sale, Wilmslow and Withington

245 Deansgate, Manchester, M3 4EN

0161 833 9499 opt 3

manchester@jordanfishwick.co.uk  
www.jordanfishwick.co.uk

